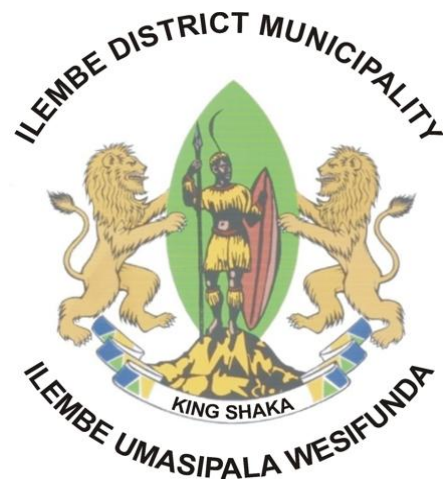


iLEMBE DISASTER RISK MANAGEMENT

SECTOR PLAN



March 2014

“Disaster Management is Everybody’s Business”



TABLE OF CONTENT

1.	INTRODUCTION	3
2.	BACKGROUND	3
3.	PURPOSE	5
4.	OUR APPROACH TO DISASTER RISK MANAGEMENT	5
5.	INSTITUTIONAL CAPACITY FOR DISASTER RISK MANAGEMENT	8
6.	DISASTER RISK ASSESSMENT	11
7.	DISASTER RISK REDUCTION	16
8.	DISASTER RESPONSE AND RECOVERY	18
9.	INFORMATION MANAGEMENT AND COMMUNICATION	21
10.	EDUCATION, TRAINING AND PUBLIC AWARENESS	24
11.	FUNDING ARRANGEMENTS FOR DISASTER RISK MANAGEMENT	26

ILEMBE DISTRICT MUNICIPALITY
MUNICIPAL DISASTER RISK DISASTER MANAGEMENT PLAN

1. INTRODUCTION

The municipal Integrated Development Plans (IDPs) are reviewed and updated annually to ensure relevance, especially on mandatory issues of service delivery. Each unit, sector or municipal entity is required to give its input to a broader IDP to be implemented during any particular financial year in terms of planned programmes, targets and the budget thereof. This document therefore outlines the input from iLembe District Disaster Risk Management Centre, mainly focusing on Disaster Risk Reduction (DRR) programmes and strategies planned for the financial year 2014/2015, as well as the response and recovery mechanisms. Financial implications have also been projected for 2015/2016 and 2016/2017 to assist with medium term budgeting processes of the municipality.

2. BACKGROUND

Section 53 of Disaster Management Act No. 57 of 2002 “DM Act” requires each municipality to prepare a **Disaster Management Plan** according to the circumstances prevailing in its area. Besides requirements of the DM Act, Section 26 (g) of the Municipal Systems Act No. 32 of 2000 also requires Municipal Disaster Management Plans to form an integral part of the municipality’s **Integrated Development Plan (IDP)**.

The Disaster Management Act No. 57 of 2002 requires iLembe District Disaster Risk Management Centre to take the following actions:

- To prepare a Municipal Disaster Risk Management Plan for its area according to the circumstances prevailing in the area and incorporating all municipal entities and other external role-players;
- To co-ordinate and align the implementation of its Municipal Disaster Risk Management Plan with those of other organs of state and any other relevant role-players; and
- To regularly review and update its Municipal Disaster Risk Management Plan (Section 48 of the Disaster Management Act No. 57 of 2002)

The Municipal Disaster Risk Management Sector Plan should:

- Form an integral part of the District's IDP so that disaster risk reduction activities can be incorporated into its developmental initiatives,
- Anticipate the likely types of disasters that might occur in the District's area and their possible effects,
- Identify the communities at risk,
- Provide for appropriate prevention, risk reduction and mitigation strategies,
- Identify and address weaknesses in capacity to deal with possible disasters,
- Facilitate maximum emergency preparedness,
- Establish the operational concepts and procedures associated with day-to-day operational response to emergencies by municipal Departments and other entities.
- Incorporate all special Hazard / Risk-specific and Departmental DRM Plans and any related emergency procedures that are to be used in the event of a disaster.

These will provide for :

- a) The allocation of responsibilities to the various role players and co-ordination in the carrying out of those responsibilities;
- b) Prompt disaster response and relief;
- c) Disaster recovery and rehabilitation focused on risk elimination or mitigation;
- d) The procurement of essential goods and services;
- e) The establishment of strategic communication links;

- f) The dissemination of information.

3. PURPOSE

The Municipal Disaster Risk Management Sector Plan is designed to establish the framework for implementation of the provisions of the Disaster Management Act No. 57 of 2002 and Disaster Risk Management Policy Framework of 2005, as well as the related provisions of the Municipal Systems Act No. 32 of 2000.

Fundamentally, the identified disaster risk reduction activities must be integrated and aligned with the main activities contained in the municipal IDP. Hence the purpose of this Disaster Risk Management Sector Plan is to outline approach and procedures for an integrated and co-ordinated disaster risk management at iLembe District that focuses on:

- Preventing or reducing the risk of disasters;
- Mitigating the severity of disasters;
- Emergency preparedness;
- Rapid and effective response to disasters; and
- Post-disaster recovery.

This Disaster Risk Management Sector Plan is intended to facilitate multi-departmental, multi-agency and multi-jurisdictional co-ordination in both disaster and disaster risk management interventions.

4. OUR APPROACH TO DISASTER RISK MANAGEMENT

Until recently, the approach to Disaster Management has been reactive and relief centric. A paradigm shift has now taken place from the relief centric syndrome to a more holistic and integrated approach with emphasis on prevention, mitigation and preparedness.

Since 1994 the South African government's approach to dealing with disasters has changed significantly (NDMC, 2008). The change in legislation governing disasters prior to 1994 was driven by several factors. One of the main reasons was the need to bring the law into the modern era so that it would be in line with international best practices in the field of disaster risk management. In addition, the government intended to systematically mainstream disaster risk reduction into developmental initiatives at national, provincial and municipal levels.

iLembe District Disaster Risk Management Centre approach to disasters and disaster risk management activities is primarily based on the requirements of the Disaster Management Act No. 57 of 2002 and relevant policy frameworks.

A typical Disaster and Disaster Risk Management continuum as shown below, comprising of six elements i.e., Prevention, Mitigation and Preparedness in pre-disaster phase, and Response, Rehabilitation and Reconstruction in post-disaster phase, defines our complete approach to Disaster Management.

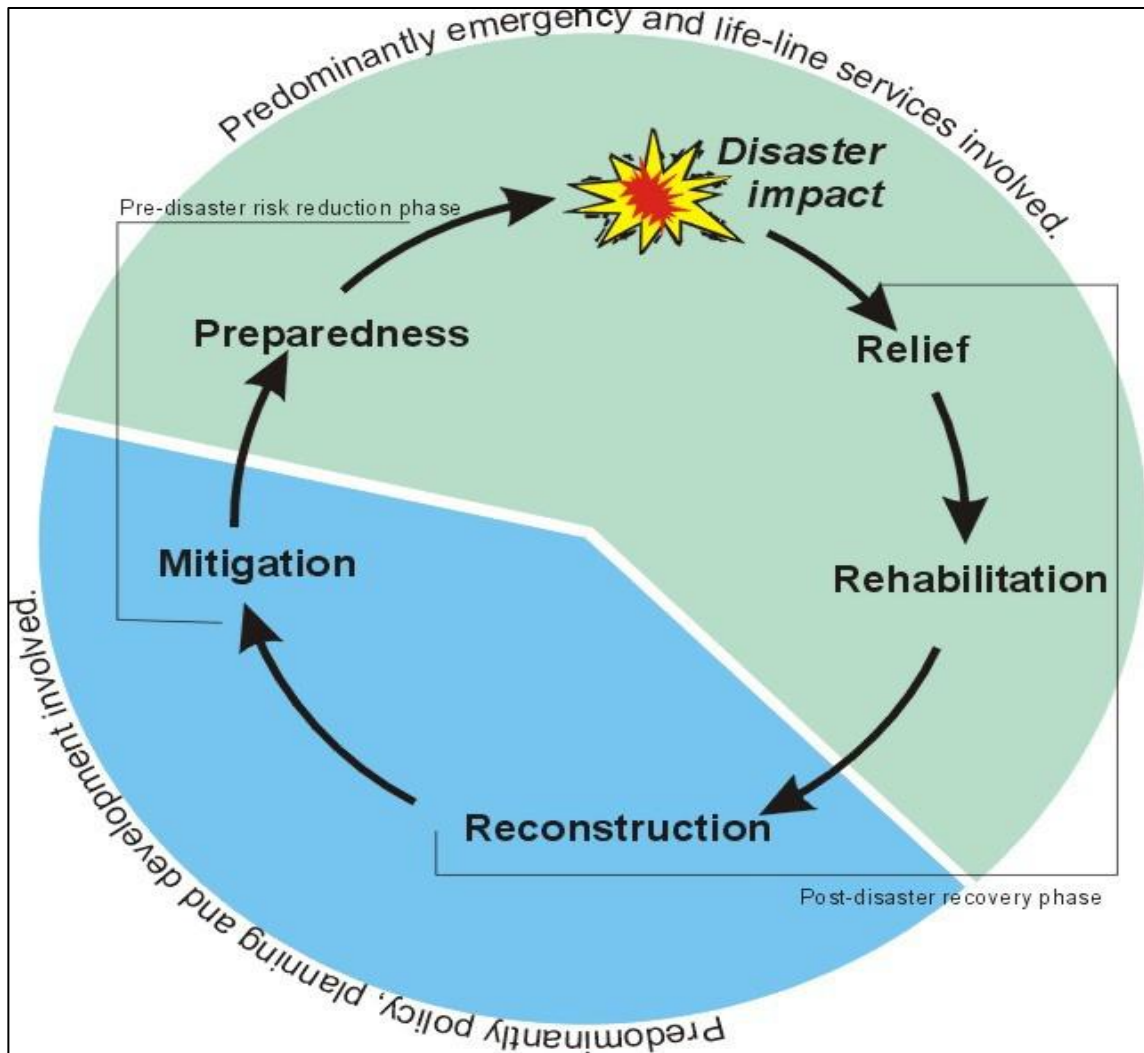


Figure 1: Disaster Risk Management Continuum

iLembe District Disaster Risk Management Centre is the custodian of the Municipal Disaster Risk Management Plan. Individual Services / Directorates, Departments and other role-players / entities will be responsible for the compilation and maintenance of their own Service’s / Entity’s Disaster Risk Management plans. Along with the various specific Hazard Disaster Risk Management Plans, the Service / Entity Disaster Risk Management Plans will be considered as integral parts of the Municipal Disaster Risk Management Plan.

KEY PERFORMANCE AREA 1

The objective is to establish Integrated Institutional Capacity within the District to enable the effective implementation of disaster risk management policy and legislation.

1. INSTITUTIONAL CAPACITY FOR DISASTER RISK MANAGEMENT

1.1. Municipal Disaster Management Centre

The dedicated District Disaster Management Centre building for iLembe District has been completed, with plans already underway to ensure that the Centre is fully operational by June 2014. There is ongoing training of Disaster Management personnel on the Communication System that will be relocated to the new Disaster Management Centre. Whilst other issues are being finalised to relocate staff into the new building, iLembe District is able to render disaster management services in an efficient and effective manner. It is also important to mention that deployment of three extra personnel from COGTA is also assisting the District to perform its mandatory role of disaster management co-ordination.

Currently, the Centre operates at iLembe District offices situated in Stanger and at uMhlali Offices. These offices have all requisite facilities and equipment such as boardrooms, telephones, internet, faxes, computers and storeroom, and allows for normal day to day activities of the centre. As already mentioned above, disaster management personnel and water call centre personnel will be relocated to the new Disaster Management Centre. Once the new Disaster Management Centre is fully functional, Call Centre personnel should be able to handle both water and sanitation, including disaster management queries on a 24 hour basis. This initiative should further improve the already existing good turnaround time when responding to incidents.

1.2. Municipal Disaster Risk Management Policy Framework

As required by Section 53 of the Disaster Management Act No.57 of 2002, the applicable District Disaster Risk Management Policy Framework was developed in 2008 and is in line with the provisions of the National Disaster Risk Management Policy Framework of 2005. However, the District has already initiated a process to review both its Disaster Management Plan and its Framework.

1.3. Municipal Disaster Management Plan

As required by Section 53 of the Disaster Management Act No.57 of 2002, the applicable District Disaster Risk Management Plan was developed in 2008. The hazards and disaster risks are dynamic and hence various methods have been used to ensure that the accurate risk profile of the district is known. Capturing and keeping of incidents or disaster data is one of the methods that have been employed to ensure that the spatial location of prevailing hazards and risks are well known particularly at a Ward Level. The District has used this scientific method to understand and spot the spatial or geographic locating of hazards and associated risks and for the purpose of designing specific disaster risk reduction activities that are targeting affected communities.

The District has already initiated a process to review its Disaster Management Plan which was developed in 2009. Core to the review of the Plan is a comprehensive Ward Based Risk Assessment Process which will be conducted in partnership and in consultation with the local municipalities and other disaster management stakeholders. The risk assessments process will also assist iLembe District to properly understand its current hazards, vulnerabilities and capacity capabilities in dealing with identified hazards. The process will also be conducted through inviting stakeholders and roleplayers from various sectors and disciplines. The review of the Plan will be a multi-year project that will ensure that appropriate development of

Disaster Risk Reduction Projects aligned to the IDP, with proper alignment to the Spatial Development Framework.

1.4. Political Forum Dealing With Disaster Risk Management

At iLembe District, there is a political forum that deals with issues pertaining to disasters and disaster risk management. The political forum is the Amenities, Safety And Security Portfolio Committee which meets on a monthly basis to deliberate on various issues.

1.5. Municipal Disaster Management Inter-Departmental Committee

Internally, all disaster management reports are first discussed at MANCO level which is Senior Management Forum. All disaster management reports need to be approved at this senior administrative level before being submitted to the relevant political forums. MANCO meetings are held on a weekly basis and his also assists to take quick decisions in all issues that need to be elevated to various municipal levels

1.6. District Disaster Risk Management Practitioners Meeting

The District Disaster Risk Management Practitioners forum has been established and comprises of all four (4) Local Municipalities at iLembe District Municipality. The main objective of these meetings that are held on a monthly is to share experiences and best practices in the district. Another important objective is to enhance capacity and a uniform approach on issues pertaining to disasters and disaster risk management in the district, as envisaged by disaster management legislation and policy. The meetings have been fruitful as they are also utilised to conscientise local municipalities on their expected roles and responsibilities as required by the reviewed Disaster Management Act.

1.7. Municipal Disaster Management Advisory Forum (DMAF)

The District Disaster Management Advisory Forum is functional and meets quarterly or as and when necessary. The District Disaster Management Advisory Forum is a fundamental structure that gives platform for interaction of all relevant roleplayers and stakeholders that are responsible for disaster risk management in the district. It is also encouraging to mention that Maphumulo and Ndwedwe Local Municipalities already have their local Advisory Forum meetings that will ensure proper coordination of disaster management issues at a local level.

KEY PERFORMANCE AREA 2

It is important to mention that iLembe District has already started a process to conduct a comprehensive Ward Based Risk Assessment Process that will be conducted in all wards of the local municipalities. Such a process will be done with all the local municipalities and will also be supported with good monitoring systems for effective disaster risk management and risk reduction planning. Core to this process is the transfer of skills to all staff at the District and Local Municipalities to ensure that future risk assessments or review of Disaster Management Plans are conducted in house.

5. DISASTER RISK ASSESSMENT

5.1. List of Priority Risks (Hazards)

iLembe District Municipality is one of many districts in the Province that is prone to a number of natural and man-made hazards. The vulnerability varies, which mainly depends on socio-economic status as well as the exposure of a particular household or community to a specific hazard.

Although the District is reviewing its Disaster Management Plan, below is a list of priority hazards that are affecting the District, the spatiotemporal characteristics of these hazards are well known since they have been observed and recorded continuously.

Table 1: Priority hazards identified at iLembe District Municipality.

HAZARDS	LOCATION
1. Severe weather:	
a. Lightning	In all Four Local Municipalities
b. Strong winds	In all Four Local Municipalities
c. Hail	In all Four Local Municipalities
d. Heavy rain	In all Four Local Municipalities
e. Extremely Hot temperatures	In all Four Local Municipalities
f. Storm surges/Abnormal Waves	Along the Coast, affecting KwaDukuza and Mandeni
2. Fires	In all Four Local Municipalities
3. Aircraft Crash	Below the flight lines
4. Accidents (MVA)	Mostly on N2

5.2. Hazards and Vulnerability Maps

Figure 2: iLembe Lightning Density Map (2010-2011)



Figure 3: High incidents Zones in iLembe District Municipality (2010 - 2011)

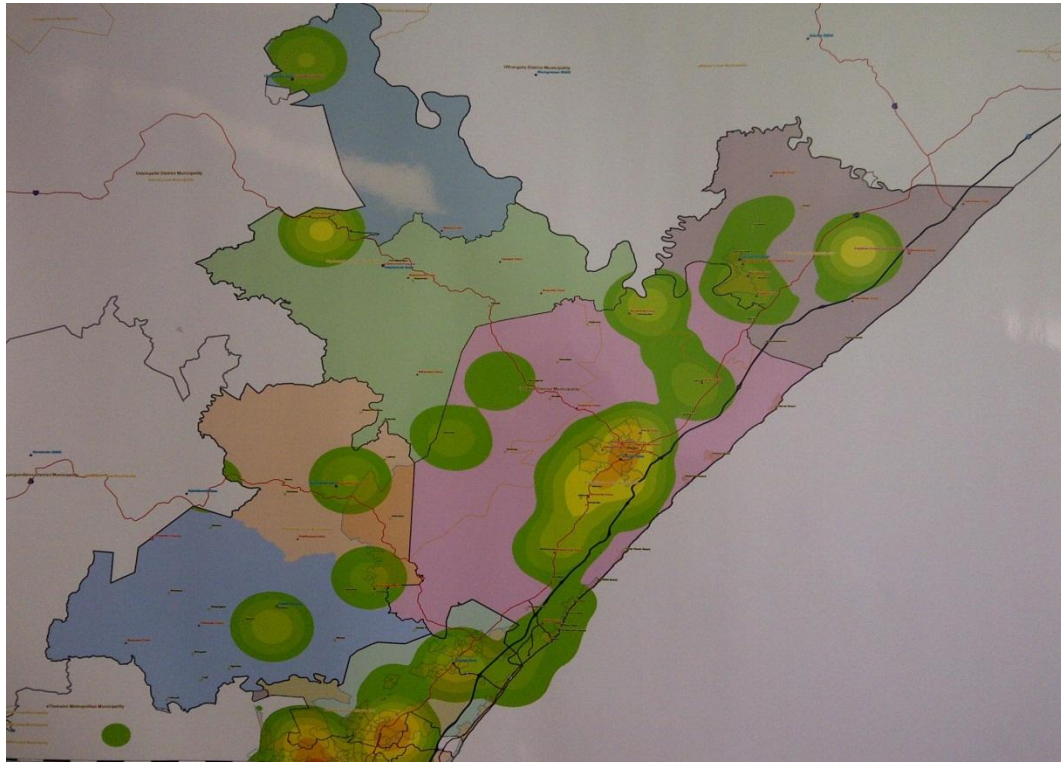
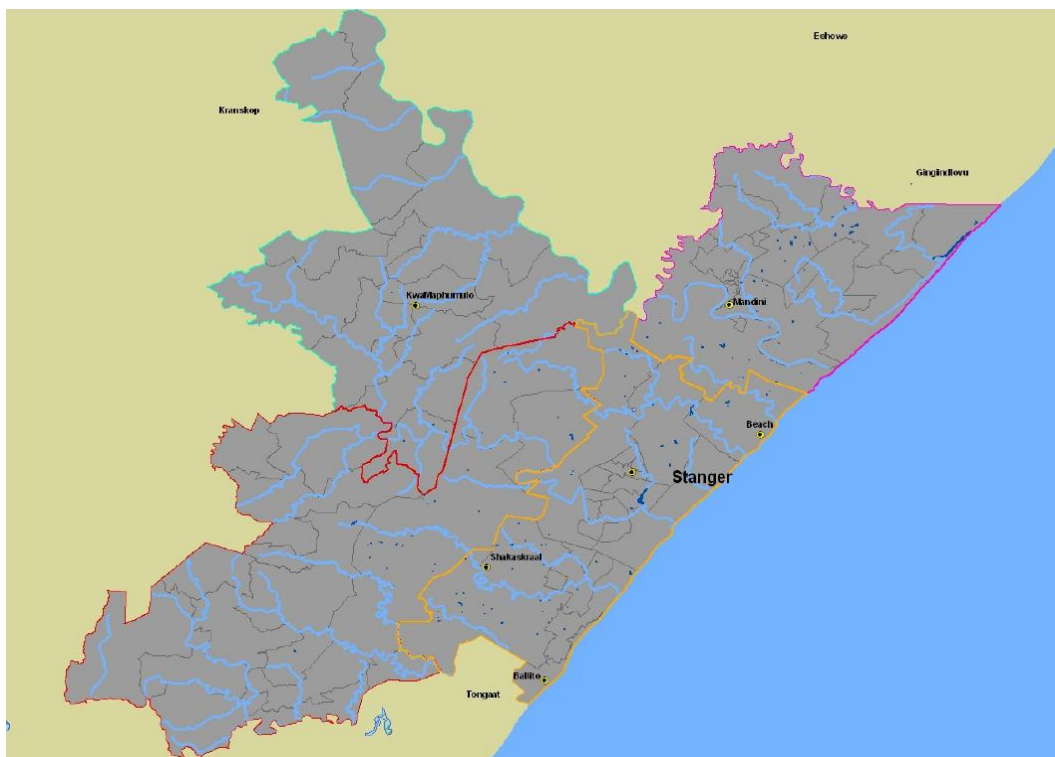


Figure 4: Areas that are prone to flooding



KEY PERFORMANCE AREA 3

iLembe District Disaster Risk Management Centre must ensure that coherent and relevant disaster risk management planning is undertaken by all municipal entities and other institutional role players.

6. DISASTER RISK REDUCTION

6.1. iLembe District Disaster Risk Management Centre

PROJECT/PROGRAMME	BUDGET	COMMENTS	FINANCIAL YEAR
1. Awareness Campaigns	R 150 000	In all Local Municipalities	2014/2015
2. Capacity Building	R 150 000	In all Local Municipalities	2014/2015
3. Lightning Conductors	R 500 000	In all Local Municipalities	2014/2015
4. Local Support	R 1000 000	In all Local Municipalities	2014/2015
5. Emergency Relief Aid	R 1000 000	In all Local Municipalities	2014/2015
6. Development of DRMP	R 500 000	In all Local Municipalities	2014/2015
7. Development of DDMC	R 2 000 000	District Municipality	2014/2015

6.2. iLembe Technical Services

PROJECT/PROGRAMME	BUDGET	COMMENTS	FINANCIAL YEAR
1. Provision of Water	~	In all Local Municipalities	2014/2015
2. Sanitation	~	In all Local Municipalities	2014/2015

6.3. Disaster Management Programmes/Projects by Stakeholders

6.3.1. Provincial Disaster Management Centre

PROJECT/PROGRAMME	BUDGET	COMMENTS	FINANCIAL YEAR
1. Lightning Conductors	~	10+1 District Municipalities	2014/2015
2. Capacity Building	~	10+1 District Municipalities	2014/2015
3. Awareness Campaigns	~	10+1 District Municipalities	2014/2015
4. Firefighting Support (Infrastructure And Training)	~	10+1 District Municipalities	2014/2015

6.3.2. Provincial Department of Human Settlements

PROJECT/PROGRAMME	BUDGET	COMMENTS	FINANCIAL YEAR
1. Building of Houses	~	10+1 District Municipalities	2014/2015
2. Repair of Houses	~	10+1 District Municipalities	2014/2015

6.3.3. Provincial Department of Transport

PROJECT/PROGRAMME	BUDGET	COMMENTS	FINANCIAL YEAR
1. Road Construction	~	10+1 District Municipalities	2014/2015
2. Road Repairs	~	10+1 District Municipalities	2014/2015
3. Building of Bridges	~	10+1 District Municipalities	2014/2015
4. Causeway	~	10+1 District Municipalities	2014/2015
5. Awareness Campaigns	~	10+1 District Municipalities	2014/2015

KEY PERFORMANCE AREA 4

The objective is to ensure effective and appropriate disaster response and recovery by:

- Implementing a uniform approach to the dissemination of early warnings in the district;
- Averting or reducing the potential impact in respect of personal injury, health, loss of life, property, infrastructure, environments and government services;
- Implementing immediate integrated and appropriate response and relief measures when significant events or disasters occur or are threatening to occur; and
- Implementing all rehabilitation and reconstruction strategies following a disaster in an integrated and developmental manner.

7. DISASTER RESPONSE AND RECOVERY

7.1. Municipal Capacity in terms of Response and Recovery

Whenever there is a threatening or imminent hazard, an early warning shall be disseminated accordingly to the relevant communities or sectors. Preparedness levels shall be kept high all the times through various means e.g. physical engagement with the public particularly during capacity building and awareness campaign programmes as well as through the media and other methods.

All relevant primary responders will be utilised to carry out their mandatory responsibilities.e.g SAPS, EMRS, Local Fire Departments etc. Also, Ward Councillors, Ward Committees, Traditional Leadership, Volunteers and Community Development Workers will be utilized to carryout response and recovery activities.

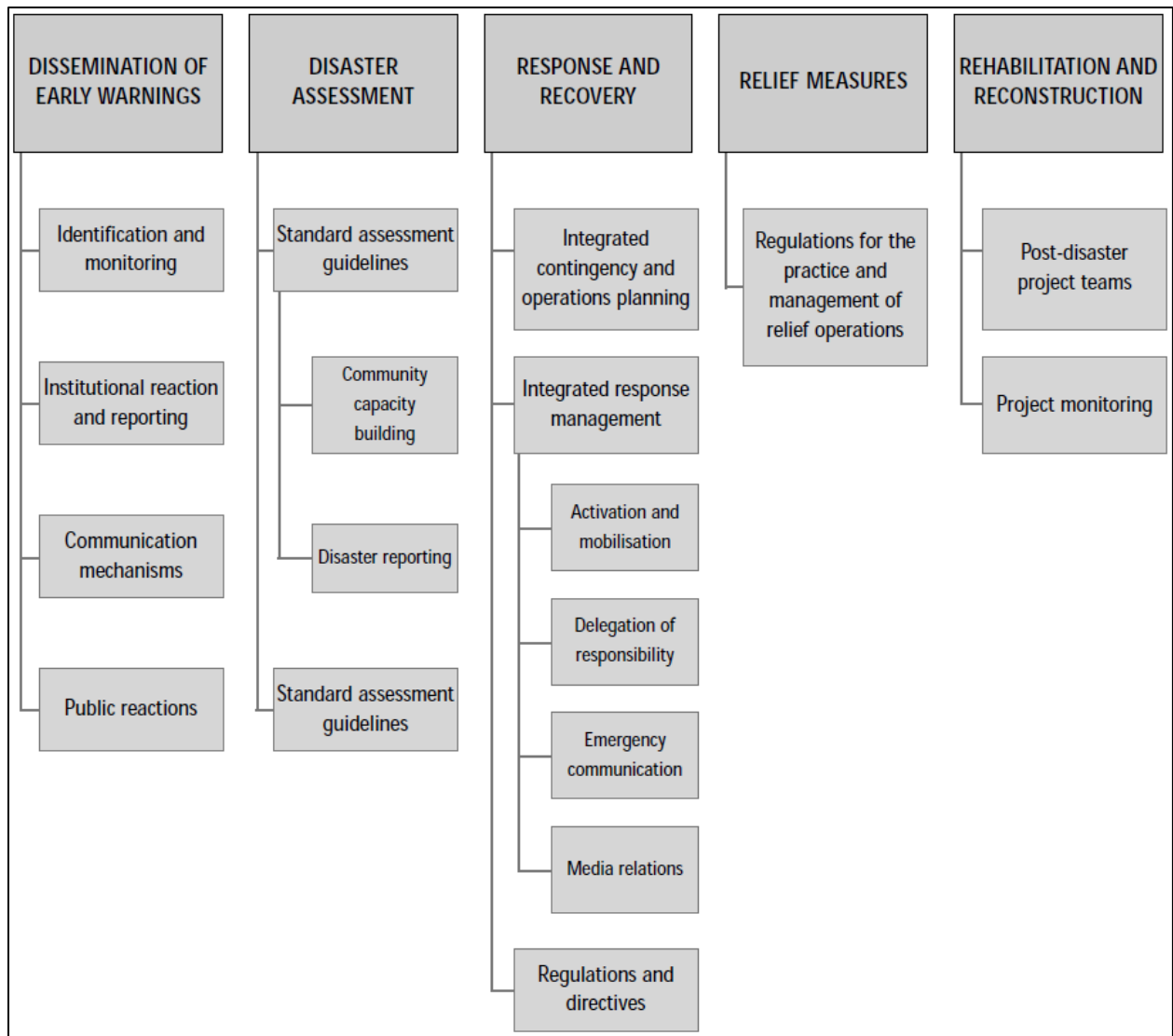


Figure 5: District Disaster Response and Recovery Framework

7.2. List of relevant and key stakeholders in Response and Recovery

The following is the list of relevant and key roleplayers in disaster response and recovery.

INSTITUTION	CONTACT PERSON	CONTACT DETAILS
iLembe Disaster Management Centre	Mr S Ngubane	0718797155
iLembe Disaster Management Centre	Sibongiseni Xulu	083 388 2811
iLembe Disaster Management Centre	Dan Mhlongo	071 860 7548
iLembe Disaster Management Centre	Bongani Buthelezi	071 860 7539
iLembe Disaster Management Centre	Bheki Mkhize	074 676 5495
iLembe Technical Services	Mr Elias Bhengu	0835628292
KwaDukuza Fire Station	A. Naidoo	072 400 8889
SASSA	Mr Vincent Bulunga	0721001817
Department of Social Development	Mr Mike Pitso	0827113733
South African Police Service	Captain Pillay	0845498029
Department of Human Settlements	Ms Mazwi Memela	0823471565
Department of Agriculture And Environment	Mr Ntokozo Ngubo	0849190147
Department of Agriculture And Environment	G.M Dlamini	0824547321
Ndwedwe Local Municipality	Mr Thetha Ngiba	0725074808
Mandeni Local Municipality	Mr Sibusiso Sithole	0823539734
Maphumulo Local Municipality	Mr Chris Mhlongo	0826675558
Maphumulo Local Municipality	Mr Chris Mhlongo	0826675558
Working On Fire	Ms Makhosi Dladla	0742774110

Department Of Health	Ms N.A Nyembe	0325323050
Department of Transport	Mr Thami Khumalo	0324373600
KwaDukuza Local Municipality	Mr Ashwin Panday	0837912069
Emergency Medical Rescue Services	Mr Lenny Doransamy	0839916232
Red Cross	Mr C. Vezi	0737235628
Al-Imdaad Foundation	Mr Abed Karim	0825878602

ENABLER 1

The objective is to ensure a comprehensive information management and communication system and establish integrated communication links with all disaster risk management roleplayers.

8. INFORMATION MANAGEMENT AND COMMUNICATION

8.1. Information Management and Communication System Model

The District aspires to establish an information and communication system that satisfies all the requirement of the framework on figure 4. Towards achieving this goal, both disaster management and water call centre staff have been trained on the Communication System that is currently located at Umhlali Offices. The system will be relocated to the new Disaster Management Centre, and also be tested for full functionality. It is envisaged that the system will also be able to link up with all local municipalities at iLembe District. One of the advantages of the new Communication system is the usage of modern devices (Tablets/i-Pads) when conducting damage assessments with the District Risk Profile automatically updates as and when incident assessments are done. The Communication System will also be used as conduit and repository for information, with historical climate data to be utilised and stored at the

Centre through the communication system. Also, the system will also be utilised as a tool to disseminate Early Warning Information with linkages expected to Satellite Images, Lightning Detection Networks and Observational Networks of the South African Weather Services (SAWS).

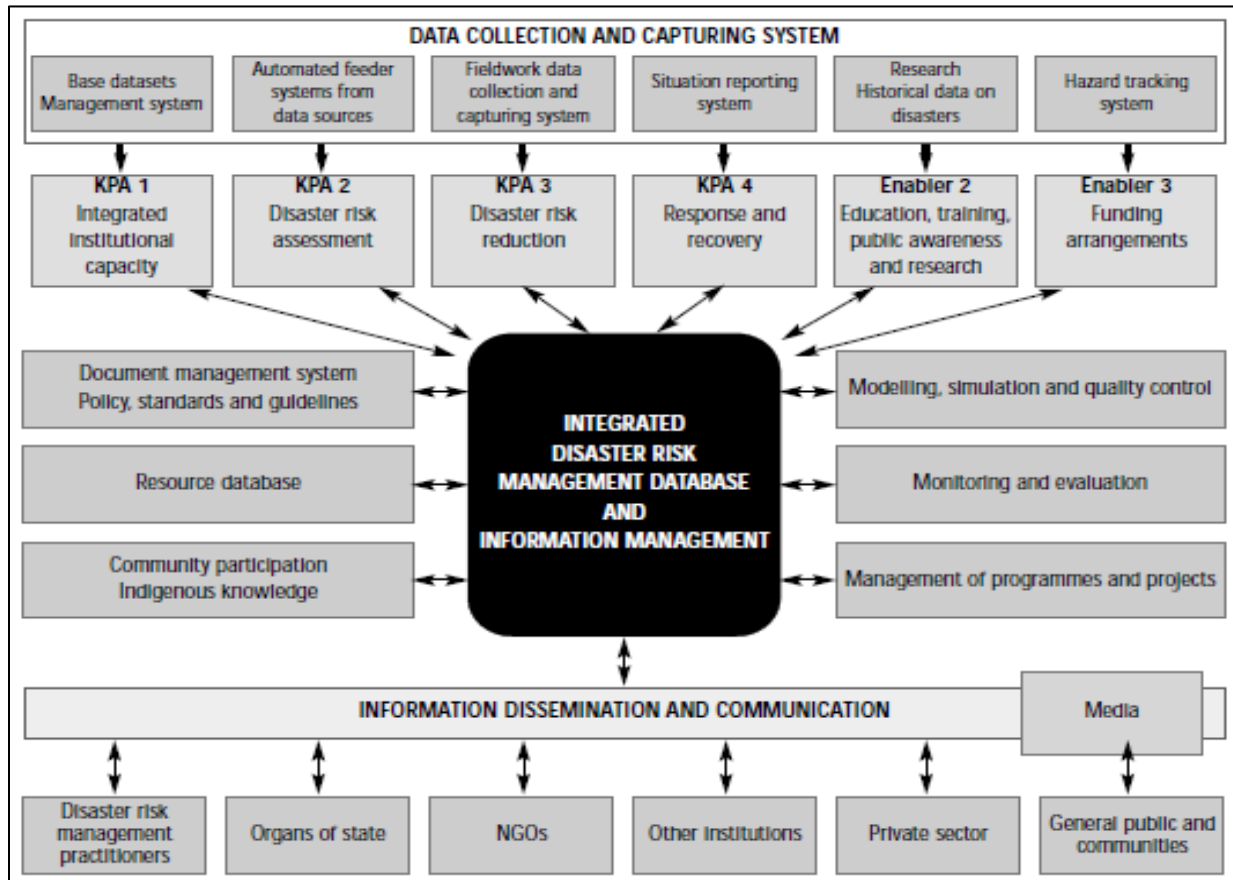


Figure 6: Model of an integrated information management and communication system for disaster risk management (Source: NDRMPF, 2005).

It is envisaged that the system will link the District and all its Local Municipalities, including all other relevant stakeholders. At the moment the existing system is mainly used for capturing and monitoring of incidents, and response thereof. The vision is to have an integrated municipal call centre where all queries regarding the services will be directed and attended to efficiently. The current collection and storage of incidents/disasters assist in disaster risk reduction planning and strategic development interventions.

ENABLER 2

The objective is to promote a culture of risk avoidance among stakeholders by capacitating role players through integrated education, training and public awareness programmes informed by scientific research.

9. EDUCATION, TRAINING AND PUBLIC AWARENESS

An integrated capacity building and public awareness strategy for iLembe District has been developed and continuously implemented to encourage risk avoidance behaviour by all role players, including all departments. Some of the main targets include schools and vulnerable communities who are always adversely affected by incidents. Such a strategy seeks to promote an informed, alert and self-reliant society capable of playing its part in supporting and co-operating with the District in all aspects of disaster risk and vulnerability reduction.

9.1. Capacity Building Programmes

Table 2: Capacity building workshops will target various critical roleplayers as shown on the table below.

TARGETED STAKEHOLDERS	BUDGET	COMMENTS	FINANCIAL YEAR
1. Training of Councillors	~	All Local Municipalities	2014/2015
2. Training of Traditional Leaders	~	All Local Municipalities	2014/2015
3. Training of Educators	~	All Local Municipalities	2014/2015
4. Training of Ward Committees	~	All Local Municipalities	2014/2015
5. Training of Volunteers	~	All Local Municipalities	2014/2015
6. Other stakeholders	~	All Local Municipalities	2014/2015

9.2. Public Awareness Campaigns

Table 3: Public awareness campaigns will target critical sectors of our society as shown on table below.

TARGETED STAKEHOLDERS	BUDGET	COMMENTS	FINANCIAL YEAR
1. Schools	~	All Local Municipalities	2014/2015
2. Communities (at risk)	~	All Local Municipalities	2014/2015
3. Informal Settlements	~	All Local Municipalities	2014/2015
4. Traditional Authorities	~	All Local Municipalities	2014/2015
5. Other stakeholders	~	All Local Municipalities	2014/2015

ENABLER 3

Given the provisions of the DM Act, funding arrangements must be designed in a manner that ensures that disaster risk management activities are funded adequately and in a sustainable way.

10. FUNDING ARRANGEMENTS FOR DISASTER RISK MANAGEMENT

Funding for disaster risk reduction historically has tended to come from humanitarian assistance, which typically responds to emergency assistance and relief needs at the time of a disaster or crisis situation.

Recent developments have encouraged it to become embedded in development projects, particularly in disaster risk reduction initiatives. It is pleasing to state that iLembe District Municipality dedicates its significant share of budget to disaster and disaster risk management operations

10.1. Sources of Funding

- iLembe District Municipality
- Provincial Disaster Management Centre
- National Disaster Management Centre (prospective)

10.2. Budget and Planned Programmes

Table 4: Budgets for programmes

PROJECT/PROGRAMME	BUDGET	COMMENTS	FINANCIAL YEAR
1. Awareness Campaigns	R 150 000	All Local Municipalities	2014/2015
	R200 000	All Local Municipalities	2015/2016
	R250 000	All Local Municipalities	2016/2017
2. Capacity Building	R 150 000	All Local Municipalities	2014/2015
	R200 000	All Local Municipalities	2015/2016

	R250 000	All Local Municipalities	2016/2017
4. Review Of District Disaster Risk Management Plan (DRMP)	R 500 000	All Local Municipalities	2014/2015
	R 1000 000	All Local Municipalities	2015/2016
	R1 500 000	All Local Municipalities	2016/2017
5. Enhancement of The District Disaster Management Centre(DDMC)	R 2 000 000	District Municipality	2014/2015
	R 2 500 000	District Municipality	2015/2016
	R 3 000 000	District Municipality	2016/2017
6.Installation Of Lightning Conductors	R 500 000	All Local Municipalities	2014/2015
	R800 000	All Local Municipalities	2015/2016
	R1 000 000	All Local Municipalities	2016/2017